

SERVICE & SUPPORT

Thank you for choosing Sutter Instrument products. To guarantee the highest standards of quality and performance, every instrument is fabricated on site by highly skilled technicians. The instrument contained herein has been assembled with care and tested to assure it meets rigid quality control standards.

We hope that our instruments and products continually meet your needs. However, should a problem arise, please contact our technical support staff to discuss your concerns. If the instrument requires factory service, we will furnish shipping instructions. Items under warranty will be repaired free of any costs, for parts or service. Both delivery and return shipping costs are the responsibility of the owner.

This product carries a limited warranty of 2 years for parts and labor.

Our office hours are 8:00 am to 5:00 pm Pacific Standard Time, Monday through Friday.

Phone	1.888.883.0128
Fax	1.888.883.0900
Intl. Phone	1.415.883.0128
Intl. Fax	1.415.883.0572

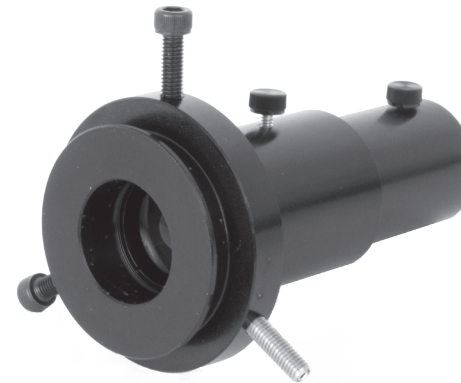
Sutter Instrument
One Digital Drive
Novato, CA 94949

info@sutter.com
www.sutter.com



LG-L10, LG-L20, LG-L30, LG-L40

LIGHT GUIDE ADAPTER FOR LEICA DMR, DMIRB, DMIRE2,
DM 4000/5000/6000, DM 6000 FS, AND DMI 4000/5000/6000



INSTALLATION INSTRUCTIONS

SUTTER INSTRUMENT

LIGHT GUIDE ADAPTER FOR LEICA MICROSCOPES

The Leica Collimating Adapter ships assembled.

The Leica Light Guide Adapter consists of: (a) a lens tube that receives the end of the liquid light guide, (b) a dovetail tube that receives the lens tube, and (c) a collar that attaches to the epifluorescent lamp input of the microscope.

Read the instructions carefully. If you have any questions please contact Sutter Instrument for assistance.

INSTALLATION INSTRUCTIONS

This adapter is shipped assembled and ready for installation. Slide the end of the liquid light guide into the lens holder. Point the lens holder at a flat surface approximately 8-10 feet (~3m) away and focus the output to a well defined spot. Secure the liquid light guide in place with the thumbscrew. Once the output has been collimated the entire assembly can be installed on the microscope

This completes the installation. One can move the liquid light guide relative to the lens holder and use the socket head cap screws to center the output of the liquid light guide. These two adjustments allow one to optimize filling of the field and field flatness.

LG-L10, LG-L20, LG-L30, LG-L40

